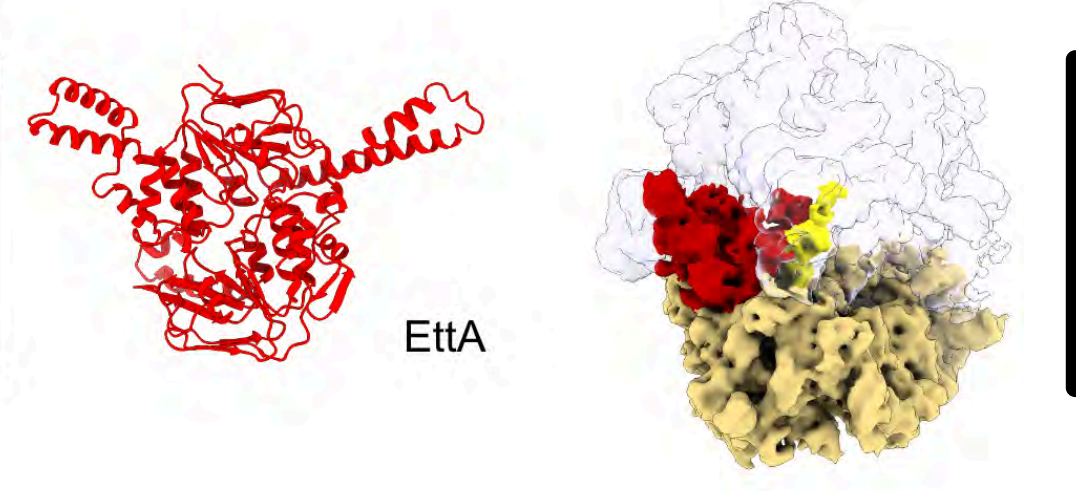
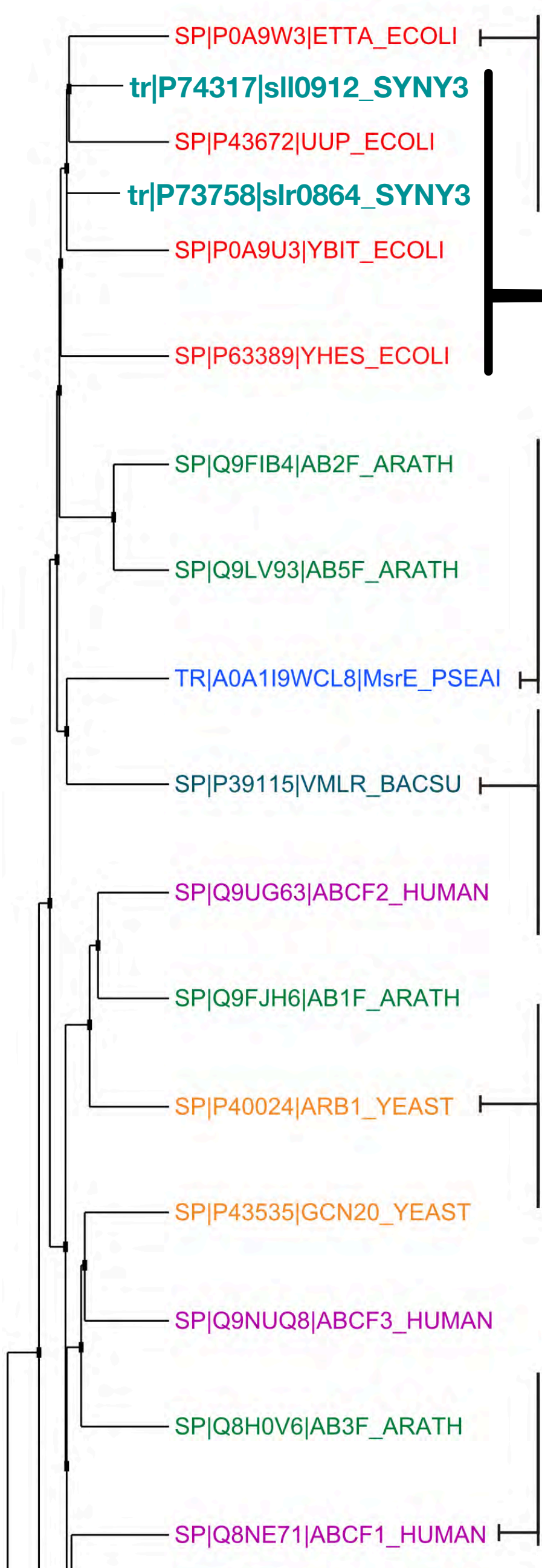


ABC-F Proteins

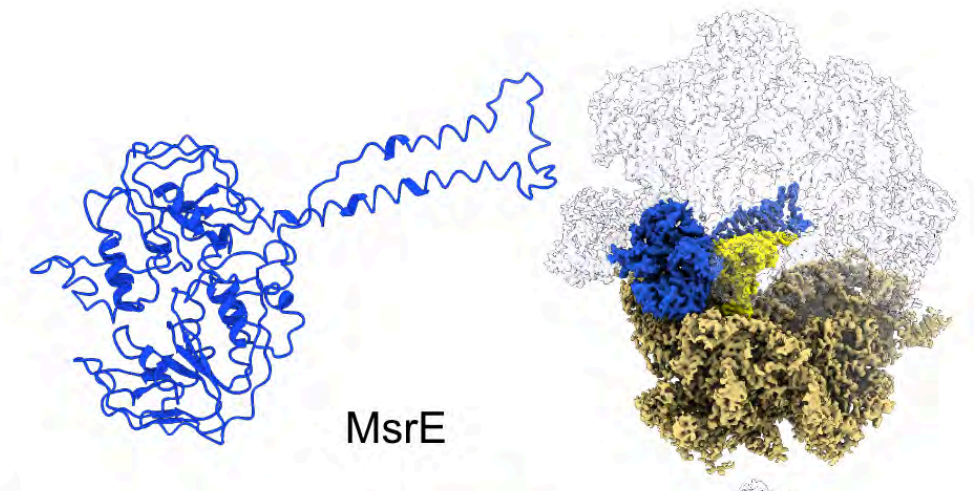
Bind to the ribosomal E-site



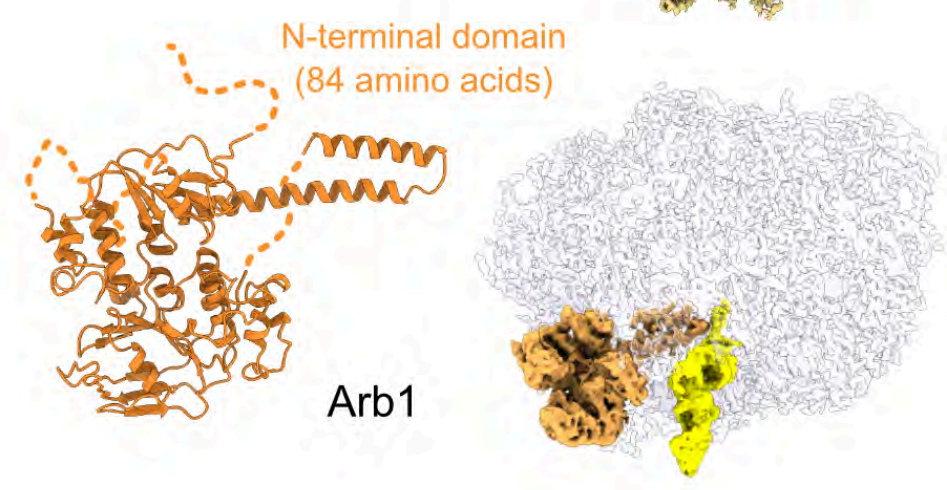
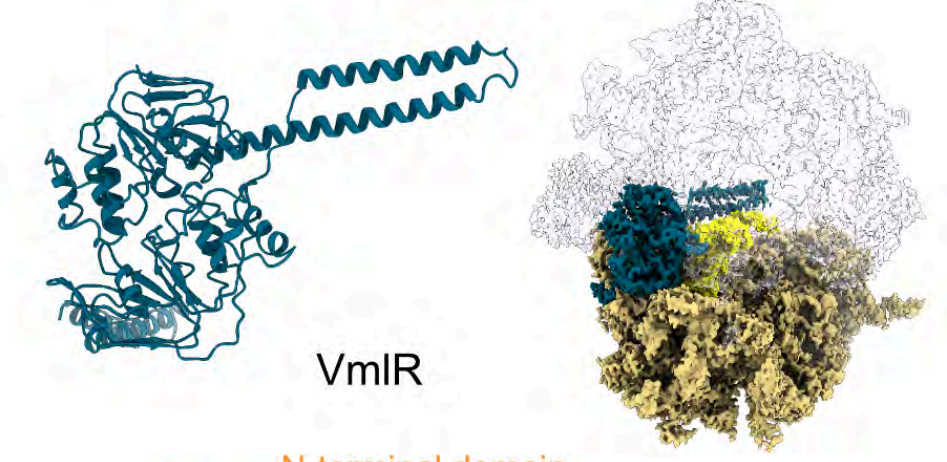
Adaptation to environment (stationary phase)
Mediate protein synthesis of specific genes

- Deletion:
- Engender specific phenotypes
 - Mediate expression of specific proteins

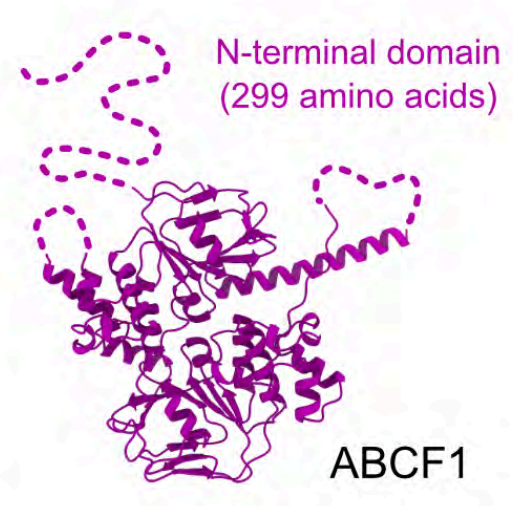
? → What are the determinants for the specificity
→ How the expression is mediated



Antibiotic resistance



Ribosome rescue ?



Protein folding quality control ?

- ☑ Phenotype screen
- ☑ Global approaches (proteomic, RNA-seq, RIBO-seq) in the phenotype condition(s)
- ☑ Genetic confirmation
- ☑ *In vitro* assay

Physiological function of the ABC-F proteins